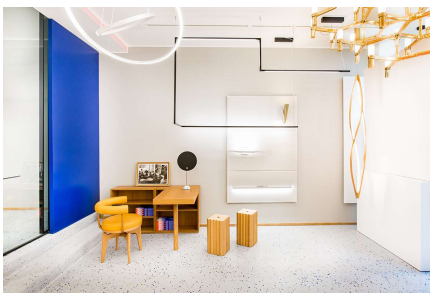
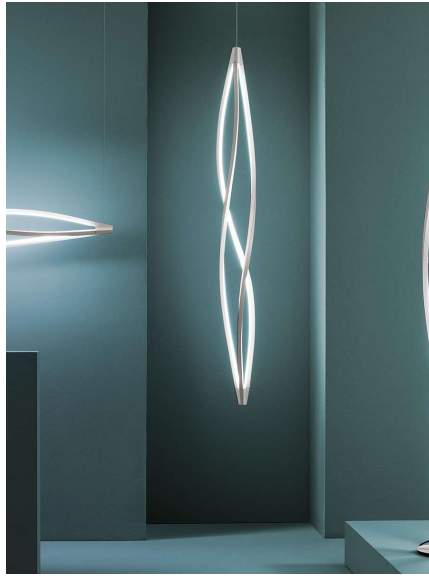


In The Wind Vertical Pendant





Description

Pendant lamp for a warm emission of LED light. The body is manufactured through a technology of torsion and misalignment of the aluminum extruded bar, expressly studied by Nemo (patent pending). It allows a 360° LED lighting. Heads are in die-casted aluminium. Diffusers are in opal metacrylate. Heads, base and arms are painted in matt white or black.

"In The Wind is an attempt of finding a new way, interest or answer for a lighting object based on the contemporary development of LED technology. In a time in which the light source itself can even be designed according to each object, the question would be how the lighting design should meet technology and how the light should look like. My answer is a simple, yet very fresh attempt, free from ready-made ideas,

Additional Information

Supplier	NEMO
Designer	Arihiro Miyake
Country	Italy
Finishes	White, Black
Materials	Aluminium
SKU	NE/INTHEWINDVER
Colour Temp	3000k
Source	LED
Wattage	3 x 20w
Output	5700lm
CRI	83
Dimmable	Yes
Installation	Surface Mounted
Max Drop	3m