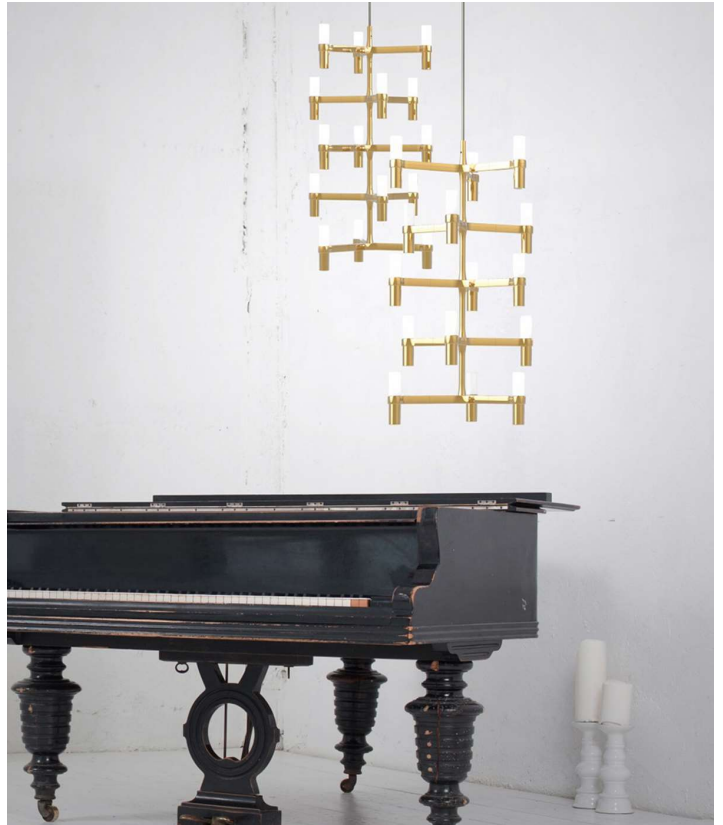


## Crown Multi





## Description

---

Pendant chandeliers, with modular structure in die-casted aluminium and sandblasted glass diffusers. Structure glossy polished, painted in white, matt black or gold. Available a NEMO LED G9 kit for a warm tone. Widespread light. Double switch for versions with more than a level. Red cable on Minor or Major version (with the exception of gold painted version). Transparent on all other versions.

Commercial Lighting Design  
Website: [commerciallightingdesigns.com.au](http://commerciallightingdesigns.com.au)  
Email: [info@commerciallightingdesigns.com.au](mailto:info@commerciallightingdesigns.com.au)  
Phone: 02 8014 3897

## Additional Information

---

Supplier	NEMO
Country	Italy
Finishes	Polished, White, Black or Gold
SKU	NE S/CROWN/MULTI
Globe	15 x 25W
IP Rating	N/A
Colour Temp	N/A
Beam Spread	N/A
Dimmable	N/A
Installation	N/A
Dimensions	46 cm DIA x 200 cm H TOTAL

Commercial Lighting Design  
Website: [commerciallightingdesigns.com.au](http://commerciallightingdesigns.com.au)  
Email: [info@commerciallightingdesigns.com.au](mailto:info@commerciallightingdesigns.com.au)  
Phone: 02 8014 3897